

No. 197 | Summer 2022

MAGAZINE
OF THE YEAR



CAMPAIGN
FOR
REAL ALE

Norfolk

NIPS

YOUR
FREE
COPY



Saving the

Blue Bell

East Coast
Crawl

Summer
Festivals

Pet Friendly
Pubs

Magazine of the Norfolk Branches of the Campaign for Real Ale



OPEN DAILY FROM 12 NOON

91-93 Waterloo Rd, Norwich NR3 1EG
 dukeofwellingtonnorwich@gmail.com
 01603 441182

**REAL ALES & CIDERS KEG BEERS WINE GIN
 WHISKY PUB SNACKS BEER GARDEN
 DOGS WELCOME**

**ANNUAL BEER FESTIVAL
 25-31 AUGUST**
 ALES, CIDERS, CRAFT AND LIVE MUSIC



**IN THE HEART
 OF NR3 SINCE
 2000**

Hello from the Editor

Welcome to your
 Summer 2022 Norfolk Nips!

It's a bumper edition this time, with 64 pages packed full of news and features about our wonderful Norfolk pubs and breweries.

Summer is always a great time for pubs, with beer festivals, outside seating areas and special events guaranteed to attract customers. This is even more true in our coastal towns and villages, where pubs are at their busiest during the holiday season.

We've brought a bit of the seaside to Nips - our featured pub crawl on page 30 travels the east coast from Great Yarmouth to Hemsby, Winterton, Somerton and Martham. Quite a distance, but effortlessly covered by the Coastal Clipper open top bus. Don't forget your sunscreen, hat and shades!

It's also a brilliant time to 'go up the city' as the Norwich and Beyond Pub Festival is back for its second year. There's an impressive 81 pubs taking part, across Norwich and the surrounding areas. You'll find details of this, and dozens of pub beer festivals, in our July to October Festival Guide on page 36.

We're very pleased to share a couple of brilliant success stories of pubs which were

once under threat. Our cover stars are the community of Stoke Ferry, who bought and reopened the Blue Bell and were awarded CAMRA's National Pub Saving Award. Read more on page 60. And after being closed for a decade, the Suffield Arms at Gunton has reopened with a very stylish new look, which you can check out on page 52.



If heading off for a camping or motorhome adventure is your thing, but you don't want to be too far from a pub, we've got your guide to A Pint on Site on page 42. And for animal lovers, our Pets in Pubs feature on page 26 has more photos of furry friends than you could throw a stick for!

So have a wonderful summer, make the most of our brilliant pubs, beer festivals and brewery open days, and don't forget to take lots of photos. If you'd like to see your snaps in a future edition, please send them to editor@norfolknips.org.uk



LUCY COUSINS
 Editor

In this issue



06



20



26



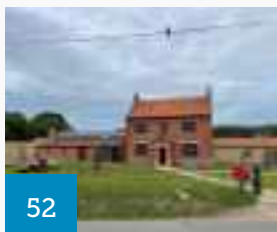
14



30



46



52



56



60

- 06 **Pub News**
What's been going on at Norfolk's pubs?

- 14 **Brewery News** Collaborations, brewery moves and special brews.

- 20 **Remembering Michael Phillips**
Celebrating his life and contribution.

- 22 **West Norfolk Awards** Our Pub, Club and Cider Pub of the Year.

- 24 **The Real Ale Canary**
A sneak preview of Neil Collings' new book.

- 26 **Pets in Pubs**
Meet some of our four-legged friends.

- 30 **East Coast Crawl**
Visit to seaside pubs on the open top bus.

- 36 **Your Guide to Beer Festivals**
From July to October.

- 42 **A Pint on Site**
Perfects pubs for campers and motorhomes.

- 44 **Journeys in Judging**
Regional Pub of the Year competition.

- 46 **Golden Star Morris**
Dancing at the City of Ale.

- 48 **Bar Billiards**
Get to know this classic pub game.

- 52 **The Suffield Arms** A restoration story for this historic Norfolk pub.

- 54 **Norwich Amateur Brewers Festival**
A review of the brews.

- 56 **Great Yarmouth Beer and Circus Festival**
A fantastic performance all round.

- 58 **CAMRA membership**
Find your reason to join.

- 59 **Dates for your Diary**
Social events.

- 60 **Saving the Blue Bell**
Stoke Ferry's award winning community.

- 62 **Last Orders** Dog Days aren't over according to our columnist.



BRANCH CONTACT DETAILS

NORWICH AND DISTRICT BRANCH

Chairman Ian Stamp
✉ chairman@norwich.camra.org.uk

Socials
✉ socials@norwich.camra.org.uk

Press Officer Jenny Bach
✉ pressofficer@norwich.camra.org.uk
🌐 norwich.camra.org.uk
📍 NorwichCAMRA
📱 @NorwichCAMRA
📺 NorwichCAMRA

EAST NORFOLK BRANCH

Branch Contact David Tibbitts
✉ secretary@eastnorfolk.camra.org.uk

Chair Paul Hodgson
✉ chair@eastnorfolk.camra.org.uk

🌐 eastnorfolk.camra.org.uk
📱 ENorfolkCAMRA

WEST NORFOLK BRANCH

Chair Andrea Briers
✉ contact@westnorfolk.camra.org.uk

Secretary & Branch Contact Ian Bailey
📞 01553 766904

🌐 westnorfolk.camra.org.uk
📱 wncamra

MID ANGLIA BRANCH

Chairman David Williamson
✉ judaslane.78@gmail.com

🌐 midanglia.camra.org.uk
📱 midangliacamra

PUB NEWS



Openings, closings and happenings

WEST NORFOLK

The West Norfolk CAMRA Facebook page will now accept posts from anyone. If you have an event at your local, let everyone know. Posts will be moderated, so will not appear immediately.

After many years behind the bar, Paul and Serena have left the **Stag** at West Acre. Their final weekend attracted hundreds of people who were sad to see the end of the popular pub in this incarnation. It is currently closed while ambitious plans to redevelop the pub and neighbouring area are formulated.

The application for part of the **Woolpack** in Kings Lynn to be converted to a fast food takeaway has been approved retrospectively. A sign has been erected advertising the remainder of the premises as a 'European Disco Bar' opening times to be confirmed.

West Norfolk Council have been asked to refuse an application to redevelop the site of the **House on the Green** in North Wootton.

The **Orb and Sceptre** in Kings Lynn and the **Norfolk Terrier** in Thetford have both opened as part of the new Hive brand owned by Greene King. Both feature cask beer.

There has been an application to transform a cow shed into an inn near Docking.

A tenant is being sought for the former **West Newton Social Club** on the Sandringham Estate which is scheduled to reopen as a 'destination pub'.

We have a new brewery in Swaffham. The **Steam-Shed brewery** is located near the old station and is currently producing small quantities of bottled beer which have been for sale on Holt Market since December. Paul, the brewer, has ambitions to grow slowly

and maybe look to supply pubs in the future.

The **Blackstone Bar** at Denver Mill has had a refurbishment and the beer is now delivered by handpump, rather than by gravity.

As reported elsewhere in this issue the West Norfolk Branch awards this year are:

CLUB OF THE YEAR
Ferry Lane Social Club
Kings Lynn

CIDER PUB OF THE YEAR
Live and Let Live
Kings Lynn

PUB OF THE YEAR
White Hart Free House
Ashill

The **Blue Bell** at Stoke Ferry has reopened and is now a community run and managed pub. After running barbecues on Sundays and a programme of events over Jubilee weekend, they're now fully open. You may have spotted



Newmarket Street,
01603 631557



Bishopgate
01603 629417



Grove Road
01603 628466



Unthank Road,
01603 660706



Wensum Street
01603 633122



For more information
Nick or Briony De'Ath

hello@nwbdhospitality

the article in the national press which featured the Blue Bell and the team responsible for the reopening. If not, search for it on the Guardian website.



Meanwhile, the group looking to buy the **White Hart** at Foulden have reached an impasse. The new owner is not interested in selling at a reasonable price and will not reopen the pub. Consequently, shareholders' money has been returned, as the group continues to monitor the situation.

The **Crossways** in Kings Lynn has reopened with new management and featured Timothy Taylor's Landlord as one of the choices when we held a branch event there in May. The Swan at Downham Market has also reopened as the **Swan at No. 29 Hotel and Lounge**.

The **Castle Hotel** in Downham Market has failed to sell as a hotel and an application has been made to turn it into flats and a HMO (House of Multiple Occupancy). The same fate may befall the **Elme Hall Hotel** on the Wisbech bypass, but plans have not yet been finalised and agreed.



The **Wildfowler** in Terrington St Clement has changed hands and Mike Daisley, a local man, is now the tenant. Interesting beers are promised. The **Angel** at Watlington has moved to seven days a week opening.



West Norfolk CAMRA were pleased to present a certificate to Trevor at the **Union Jack** in Roydon in recognition of his 20 years behind the bar in a pub which has twice been our Pub of the Year.

NORWICH & DISTRICT



The **Red Lion** at Cromer was chosen as our rural Pub of the

Year 2022 and we presented them with their certificates in June. Well done to the whole team and thanks for a warm welcome.



Our city and overall branch Pub of the Year, the **Kings Head** in Norwich, has also been chosen as the county winner for Norfolk. Next up is judging for the East Anglia regional competition, read more about this on page 44.



We held a presentation for them too and it was great to see several of the brewers whose beers are often found on the bar. (Matt from Moon Shortts, David from Moon Gazer, Mark from Mr Winter's and Andy from S&P)

Podge's BELGIAN BEER TOURS



Tours taking in the most innovative of Belgium's breweries, festivals and beer cafes

Beer on The Waterfront Tour
9-14 August 2022



Operation Belgian Beer: WW2 & Beer in Antwerp Province Tour
14-19 September 2022



Christmas in Bruges 2022
24-28 December 2022



The Belgian Black Beer Tour 2023
16-21 March 2023



Beer & Battlefields – The Great Thirst World War in Flanders Tour
14-18 May 2023

www.podgebeer.co.uk

Ring **07722 724 558** for details



Driving people to drink since 1994



The **Crown** at Sheringham reopened at the end of March after a major refurbishment, initially from Thursday to Saturday only. The **Alby Horseshoes Inn** reopened under new owners in July, and will be offering food from August.

The **Yare** at Brundall has been bought by local luxury boat builder Broom Boats, and will reopen with a new name, the White Heron, this summer after a significant refurbishment, as a pub restaurant for the local community and visitors.

After a few years as a Thai restaurant, the **Kings Head** at Blofield will return to operating as a pub, managed by the same team as the Ram at Brundall. They will be stocking two permanent ales from Greene King and Timothy Taylor, and one guest beer, and serving food every day, including Sunday roasts and specials.

The **Swan** at Gressenhall reopened under community ownership in May, serving drinks first, with food to follow in the autumn. The pub is being run by the same team running the Crown at Trunch and the **Chequers** at Hainford, which they took over in October.

The **Vernon Arms** at South Repps was sold in May, with long-serving hosts Paul and Debbie Briggs leaving after several years at the pub. The new owners are also involved in the Wheatshaf at West Beckham.

The **Anchor** at Morston was closed at the time of writing, and the **Old Workhouse** in Bawdeswell closed in early April this year and all signage has been removed.

The **Green Man** at Rackheath has recently closed its doors, citing the challenging economic situation. This will be a big loss to local families who enjoyed the large pub garden and play area.

The **Fox & Hounds** at Weasenham St Peter, which closed in March 2020, has planning permission for a house in the car park and is up for sale.

The **Feathers** at Holt has been taken over by the Chestnut Group, which has around twenty pubs across East Anglia. Other Norfolk pubs run by the group include the Lawns, also in Holt, the Wiveton Bell, the Globe at Wells-next-the-Sea, and the Maltings at Weybourne, all acquired in the last year or two.

The **Kings Head** at Hethersett has been taken over by Tickle's Taverns, who also run the Green Dragon at Wymondham.

The Chestnut Tree at Hellesdon has reverted to its former name of the **Bull**, following a £479k refurbishment by owners Stonegate, who have now converted it to a managed house. The pub reopened under the new name in July.

Also converted to managed is the **Three Swallows** at Cley, which reopened in June, after a £200k refurb by Punch Taverns. The pub now has an outdoor bar with a pizza oven. The beer range appears to be limited to Landlord and Doom Bar.

The Kings Head at Acle has undergone a complete transformation and is now **The Barns at the Kings Head**, with a new 'funky' decor in the bars, a street food menu, a patio garden with flowers and a barbecue, and seven new boutique B&B rooms. There's also an adjoining pottery barn, and a planned 'party barn'.

In Norwich, the team running the York in Leicester Street have taken over the **Edith Cavell** in Tombland, replacing Ben Edwards who has moved his Prime restaurant from the pub to St Giles Street. Andrew McNeil, heading the team, has said the pub would be a cafe/bistro from 9am each morning, and in the evening would offer fine dining upstairs and tapas downstairs.

The **Belle Vue**, St Phillips Road has reopened under new management, who are intending to bring back food as soon as possible, alongside a jukebox, pool table and dart board.

Ian Warren has left the **Angel Gardens** in Angel Road after 35 years at the pub, and retired after over 50 years in the trade. As one of the

Darbys Swanton Morley

Excellent Traditional Menu | Lunch & Dinner Service
Regularly Changing Ales | Large Beer Garden & Childrens Play Area | Wood-Fired Pizza & BBQ
10% CAMRA Discount & Vouchers Accepted



Elsing Road, Swanton Morley, NR20 4NY | darbyspub.co.uk | 01362 637346

THE COCK

Freehouse Dereham



Join us to enjoy our rapidly changing range of Ales plus our great choice of Draft Lagers, Cider and Craft Beer.

10% CAMRA Discount
CAMRA Vouchers Accepted
Live Music Every Sunday.

28 Norwich Street, Dereham NR19 1BX | the-cock.co.uk | 01362 693393



pioneers of real ale in Norwich, his contribution over the years has been invaluable, and we wish him well in his retirement. The pub has been taken over by Jamie Moore and reopened after a brief closure, with a new food offering, Devil's Kitchen, also available for delivery.

The **Malt & Mardle** in Magdalen Street is the latest in a string of pubs to apply for extra seating on the pavement, extending across the front of their premises and the shop next door.



Three pubs (at least) are celebrating big anniversaries this year - the **Plasterers**, on Cowgate and the **Plough** in St Benedicts Street are both 200 years old, and the **Beehive** in Leopold Road turns 100 this year. The Plough has a new sign and mural, while the Beehive commissioned a celebratory beer from Green Jack - congratulations to them!

Celebrating our first year...

Mark and Nai at The Crown, Costessey

Nai and I took over the running of the Crown on 19 July last year, the day restrictions were lifted for pubs. We've been concentrating on real ales since the start, as it's something I love, and I know will help make the Crown a great pub.

We have six handpumps in use, with a good mix of changing ales from around the UK, including many local ales. We've already welcomed a CAMRA coach trip to the pub, we're stocking copies of Norfolk Nips and we're excited to be part of Norwich & Beyond Pub Festival this summer. Thank you very much to everyone who has come to see us so far, we really appreciate your business!



Got a Pub News story in your local town or village?
editor@norfolkknips.org.uk



TRADITIONAL COUNTRY PUB AND RESTAURANT

5 REAL ALES ■ GREAT FOOD ■ SHELTERED GARDENS & PATIO

MUSIC IN THE GARDEN

31ST JUL **AGENT ORANGE** 4-7pm
 14TH AUG **TERRY ADAMS** 4-7pm
 21ST AUG **REDEMPTION** 4-7pm

COLBY ROAD, BANNINGHAM
 AYLSHAM, NR11 7DY

01263 733534

www.banninghampub.co.uk

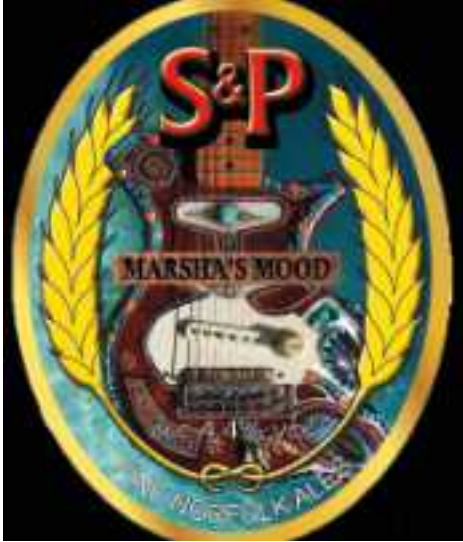
BREWERY NEWS



News from Norfolk's Breweries

OLI FERNANDEZ

Summer is here and breweries have been operating at full capacity, as the City of Ale returned after a two year forced break. It was great to be at the launch event held on 26 May and catch up with lots of brewers and publicans. It seems things in brewing are nearly back to normal, which is great to see, and all the brewers are very pleased and grateful for it.



S&P had a revamp on their 4.4% mild, Shady Sadie, which has been renamed to Marsha's Mood. Lovers of blues and rock will find the name familiar, as Andy the brewer is a fan of this style of music and of John

Mayhall, called the godfather of British rock and blues. The first time that Andy heard a track of his, called Marsha's Mood, was in his last year of boarding at Wymondham and years later he married a Marsha.

He even got Mayhall's blessing for the renaming; he was thrilled with the idea of having a beer named after his song and pictures for the pumpclip were sent by his personal assistant. So after some changes including photoshopping by Tom Mayhall, son of the artist, they got a pumpclip. The 'royalties' to pay in exchange, were a cask of the beer to be delivered in person at 'Gaz's Rockin Blues' club in Soho owned by another of John's sons.

POPPYLAND are back on track and brewing new beers, as well as distilling their gins and a vodka with botanicals, which are superb and very smooth. We visited them recently to give them their award for Bert's Dark Ale which conveniently coincided with the presentation to the Red Lion hotel for best rural pub in the Norwich and District branch. We were able to sample their Beach Hut at the pub, a 6% reddish ale, very rich in malt flavours.

They are very happy that their first two brews of 2022, Fuggles 150 and Café Racer, both have won bronze awards in the International London Beer Awards. They are continuing with their innovative brewing

epicstudios

HIGHLIGHTS



- 05/08 SWIFTOGEDDON
- 06/08 RAINDANCE
- 18/08 JAMIE WEBSTER
- 07/09 CURVED AIR
- 15/09 BC CAMPLIGHT
- 19/09 CJ WILDHEART + SCOTT SORRY



- 21/09 DOOBIE DAN
- 22/09 THE ELO ENCOUNTER
- 29/09 THINK FLOYD
- 02/10 CHINA CRISIS
- 06/10 THE SKIDS
- 08/10 NORWICH OKTOBERFEST



- 09/10 NERINA PALLOT
- 13/10 TURIN BRAKES
- 15/10 80'S VS 90'S + BARRIOKE
- 18/10 WISHBONE ASH
- 20/10 STONE FOUNDATION
- 22/10 LET'S EAT GRANDMA



- 01/11 BODEGA
- 10/11 T.REXTASY
- 13/11 THE SELECTER
- 18/11 SKID ROW
- 30/11 OZRIC TENTACLES & GONG
- 02/12 MARTIN KEMP BACK TO THE 80'S

FOR TICKETS OR FURTHER INFORMATION ABOUT OUR EVENTS, HEAD TO OUR WEBSITE: WWW.EPIC-TV.COM/EVENTS



recipes and they have a great range of bottled beers for sale on the shelves in the brewery.

To supplement their bottled beer, their casks are back in the pubs, so far the Red Lion, Cromer and the Hop In, North Walsham. It was a pleasure for them to supply beer for the City of Ale launch party and be part of the festival, which as always was a fabulous event.

The brewery in West Street, Cromer is currently open Wednesday, Thursday, Friday and Saturday afternoons where you can purchase any of their beers, gin and vodka. More details can be found at poppylandbrewery.com

FAT CAT are very busy brewing their core range, as they have an agreement with Small Beer that distributes their beer around the country. They are also producing their seasonal Tropical Tom, a 4.1% hoppy beer with added passion fruit, guava and mango, very refreshing for summer. It was lovely to visit the brewery for the first time and present Chris Riches, their brewer, with four awards.



FENGATE is expanding and if all goes well they should be moving to a larger premises at Cobble Acre Park in Hevingham later this year, they're just waiting on a planning decision. They have recently purchased a 6 barrel brewery from Tony at 8 Sail Brewing in Heckington, Lincolnshire.

Their new beers are Cobble Acre, a 4.5% pale ale brewed with Sovereign, Bullion and Firstgold hops sold in cask and bottles. And Yardarm Barleywine a 12.5% beer with strong flavours of sticky toffee pudding, Crisp Maltings #19 Maris Otter floor malt was used to produce it, and it's available in 330ml bottles.

FIVE LOCAL ALES ON DRAUGHT

01603 624173 33 NEWMARKET RD. NR2 2HN THEEAGLEPUB.CO.UK

HUMPTY DUMPTY

Cracking Real Ales Since 1990 **BREWERY** Made in Reedham, Norfolk, UK

2022 CAMRA CHAMPION BEERS OF NORFOLK

AVAILABLE THROUGHOUT CITY OF ALE ALONG WITH OTHER CRACKING REAL ALES FROM THE HEART OF THE NORFOLK BROADS

www.humptydumptybrewery.co.uk
01493 701818
Church Road, Reedham, Norfolk NR13 3TZ
Brewery ✨ Shop ✨ Events

Facebook Twitter Instagram

MUTTONSTOCK 19TH-21ST AUGUST

- Range of National & Local Ales
- Real Ciders
- Beer Garden
- Food
- 15 mins East of Norwich
- 20 mins West of Yarmouth
- Large Car Park
- 1 mile from Lingwood Station
- 15A Bus stop outside pub
- Live Music
- 📍 [shoulderofmuttonstrumpshaw](#)
- 📍 [shoulderofmuttonstrumpshaw](#)
- 📍 [shouldermutt3](#)

THE SHOULDER OF MUTTON

EST 1789

STRUMPSHAW

🐕 Dog and Horse friendly 🐾

- 📍 themuttonstrumpshaw@nips.com
- 📍 15 Norwich Road, Strumpshaw NR13 4NT
- 📞 01603 906550
- 📍 themuttonstrumpshaw.co.uk

On sale soon will be Fengate Double IPA, a 6.5% ale made with cryogenic hops, further dry hopped in the fermenter. For lovers of something darker they've created a 5.5% Coffee Porter brewed with toasted almonds, cocoa nibs and vanilla.

MOON GAZER were overwhelmed by the support that they got for David's 75kg beer push to London in aid of local cancer charity It's On The Ball. They were so pleased they raised an amazing £21,186, which was presented at the Kings Head in Magdalen Street. They thank everyone who has supported them and donated to this great cause.

They are brewing a series of monthly special brews, only available in pubs and looking to support UK hop growers by focusing on new British hops. Skipper, 4.5% is getting a 2022 British hop makeover.



The team are also doing another special tribute to Tony Banham, this time a harvest special, which will allow beer lovers and growers to raise a glass to Tony and this year's harvest. In collaboration with Mersea Island in Essex and Nethergate in Suffolk they'll be launching Three Counties, a light

golden ale, to celebrate all that is good about brewing in East Anglia, which will be found in cask and bottles.

Bouchart X their 10% anniversary bottle-conditioned ale is going down great and will be followed with 10% super-charged versions of Triskele Porter and White Face IPA. Apart from producing beer, they have teamed up with Whin Hill cider at Wells-next-the-Sea to launch a lightly sparkling cider in a can. Called Norfolk Growler, it will be available this summer.



AMPERSAND recently celebrated their 5th birthday and 1st birthday of their taproom in Diss. They've been busy making brand new beers including East Point Pale, a 4% collaboration pale ale with Sir Toby's Beers, for the launch of the East Point Pavillion and First Light Festival in Lowestoft.



Expect plenty of seasonal specials dropping over the next few months including a Nettle petite saison with Little Earth Project, and a Lime and NZ hopped light lager with Three Hills. Plus a cask-only single hop series of brews. They've also installed more cask lines at the taproom to meet demand from customers for their cask beers.



DURATION BREWING in West Acre is open for Tap Days every Friday and Saturday 12-8pm at their dog and family friendly venue. They're inviting drinkers to experience something new with six fresh draught beers pouring in the barrel store, alongside a rotating local street food menu outside in the courtyard.



This sounds like a great chance to spend time in the beautiful Norfolk countryside, enjoy a farm-to-glass beer (or other drink) and browse the brewery shop. They're also running brewery tours at 3pm on the first Saturday of the month. You can book online or walk-ins are welcome. And if you really like their beers and want to invest they have

a crowdfunding campaign, for more details check durationbeer.com



WILDCRAFT has a new purpose-built 4500 sq ft brewery in Smallburgh that should be up and running early August. To celebrate it, they will be holding 'Wildfest' on the bank holiday weekend, Saturday 27 and Sunday 28 August. This will take place on the field that is currently growing their barley!

They will be continuing to brew at the old premises for a few weeks while they make sure everything works. Once they are happy, they will leave their Buxton premises for good for their new home.

To the south, **STAR WING** at Hall Farm in Redgrave have their taproom open from Tuesday to Sunday where you can sample all their brews. During summer they have live music on some Saturdays 8pm to 11pm (when they don't have private events on, as you can hire the venue for weddings and other celebrations).

Don't miss the Summer Reggae Blast from 12.45pm until 11.45pm on Saturday 6 August with live acts, steel band and DJs. And their Beer Festival is on the bank holiday weekend, from Saturday 27 to Monday 29 August.

If you fancy getting hands on and picking some hops, Saturday 17 September is Hops and Hogs, their annual hop picking day with free hog roast for pickers, live music and street food vendors. For more information go to starwingbrewery.com



CELEBRATING THE LIFE OF

Michael Phillips

Michael sadly passed away on 21 May and will be greatly missed by everyone who worked with him on the Norwich and District CAMRA committee over the past 10 years. As Social Secretary he organised countless pub crawls, campaign trips and brewery visits, enjoyed by many hundreds of CAMRA members.

People remember his kindness, careful planning and enthusiasm for great pubs and beer. He first joined CAMRA in 1999 and volunteered at many Norwich Beer Festivals, recently running the Products stand.

Many CAMRA members expressed their shock and sadness at hearing of Michael's passing, remembering him as a lovely, kind person. He was a great friend and the Norwich pub scene won't be the same without him. He had expert level knowledge of beers of all styles, any new beers you discovered, you could bet he'd already tried and rated.

Since retiring six years ago from Aviva, where he worked for many years in Finance, Michael made the most of his free time by travelling with friends all around the UK and Europe to beer festivals, horse races and football games. His passion for Norwich City was evident, as well as his great sense of humour during tough times for the club.

Michael visited every football ground and race course in the country, and was part owner of 6 horses that he enjoyed watching, especially when they won!

Michael's funeral took place at St Faith's Crematorium on Thursday 23 June, with standing room only in the Chapel and many CAMRA members present. We think Michael would have approved of the dress code of Norwich City strips or anything bright, and the opening song... NCFC anthem On the ball City! His family invited friends to join them for refreshments at the Black Swan, Horsham St Faith following the service.

A celebration of Michael's life and contribution to the Norwich & District Branch as Social Secretary for over a decade was held on Saturday 2 July. It took place at the Fat Cat & Canary, Michael's local pub, with over sixty friends and CAMRA colleagues in attendance, along with his sister Gillian and mother Daphne.

The dress code was far from formal, with members wearing bright patterned, Hawaiian, and football shirts in Michael's honour. Graham Freeman, his friend for many years, made a moving toast, and glasses were raised to a 'gentle giant' who will be much missed. Thanks to Christian at the Fat Cat & Canary for hosting and for providing cheese and biscuits, which were much appreciated.

NORFOLK BREWHOUSE CRAFT

STOP STARING START GAZING

Moon Gazer's award-winning Gluten Free Pintail ale available in cask and bottle.

MOONGAZERALE.CO.UK

f t i moongazerale.co.uk 01328 878 495

The smallest pub in Norwich...

TheVine

WE'RE IN THE GOOD BEER MOVEMENT

SERVING EXCEPTIONALLY GOOD THAI FOOD

MONDAY CAMRA NIGHT 10% OFF FOOD AND DRINK

OPEN MONDAY TO SATURDAY VEGAN & GLUTEN FREE OPTIONS

A great Real Ale pub in the centre of the city - Large selection of World Beers

7 Dove St, near The Goldfish | 01603 677362 | vine@the.co.uk | @thevineinorwich | The Vine Norwich



West Norfolk Branch Awards 2022



West Norfolk CAMRA would like to congratulate this year's Branch Pub and Club of the Year award winners. There were some very good contenders this year and competitions were close.

THIS YEAR'S WINNERS ARE:

BRANCH PUB OF THE YEAR WINNER

White Hart Free House
Ashill



Naomi and Jonathan Pearson
(White Hart Ashill) with Andrea Briers
(West Norfolk Branch Chairman)

This is the first time that the White Hart Free House has achieved this accolade. Since it reopened in October 2020, Naomi and Jonathan, who are Ashill born and bred and had no experience in the industry prior to taking over the White Hart, have taken the pub from strength to strength. It serves a great choice of draught beers, including ones from Norfolk breweries and, like many pubs, is a hub for the community.

BRANCH CIDER PUB OF THE YEAR WINNER

Live & Let Live
Kings Lynn



Andrea and Rozi
(Live and Let Live)

The Branch Cider Pub of the Year winner, the Live and Let Live in King's Lynn, also provides excellent support for the community. Rozi Woods continues to provide a good selection of real ciders, and real ales, generally featuring products from Norfolk. Various events are held over the year to support local charities, both local and national, which are well supported and provide those benefitting with much needed funds.

BRANCH CLUB OF THE YEAR WINNER

Ferry Lane Social Club
Kings Lynn



Tracy Chapman, Barry Irwin
(Ferry Lane Social Club)

After a gap last year, when a Branch Club of the Year award was not presented, this award has now returned for 2022 and has been given to the Ferry Lane Social Club in King's Lynn. During the shut downs, they took the opportunity to redecorate and opened the Nightingale Bar in the function room. Since reopening, they have also gradually been increasing the real ales available. The latest addition to the club is the new furniture on the balcony which overlooks the river.

STUART HOUSE
HOTEL · BAR · RESTAURANT
Meet, Eat, Drink & Sleep

CAMRA - 'GOOD BEER GUIDE' LISTED OVER 20 YEARS

THE 25TH KING'S LYNN BEER FESTIVAL

LOCAL AND NATIONAL REAL ALE AND CIDER
FOOD & ENTERTAINMENT

**28TH JULY 5-11 PM,
29TH & 30TH JULY 12 TIL 11 PM**

www.stuarthousehotel.co.uk
35 Goodwins Road, Kings' Lynn. PE30 5QX Tel 01553 772169

Elgood's Brewery 10th Beer Festival

15th to 18th September 2022

150+ Real Ales
Live Bands | Food | Cider | Wine | Soft Drinks

Friday 15th September 5pm - 10.30pm
Saturday 17th September 12.00noon - 12.30pm
Sunday 18th September 12.00noon - 4pm

Entry only £5 per session
CAMRA members FREE

BOOK TICKETS 01945 583160

ELGOOD'S BREWERY
SIBA

Elgood's Brewery 72 North Brink Wisbech PE13 1LW
www.elgoods-brewery.co.uk

at Le Strange Arms Hotel,
Old Hunstanton, T: 01485 534411

at Knights Hill Hotel & Spa,
Kings Lynn, T: 01553 675566

SPECIAL OFFER

25% OFF

All food purchases in The Mariner and The Farmers when you spend £25 or more

Complete below to validate your coupon

Name:

Postcode:

Email:

FREE Wi-Fi in our pubs | PHOTOCOPIES ALLOWED
Please visit www.traditionalinns.co.uk for further offers

Terms & Conditions: The coupon is only valid when £25.00 or more is spent on food. The coupon cannot be exchanged for cash. The discount does not apply to spend on drinks. The coupon cannot be used with any other promotion. The coupon(s) are not valid in excess of 8 people. The coupon is valid from 1st July to 1st September 2022. Excludes Sundays and Bank Holidays.

To receive details of future promotions, please tick here **CODE NIPS**



THE REAL ALE CANARY

On 11 April 1998 at approximately 5.15pm, a momentous personal event occurred in the Steel City of Sheffield. My team Norwich City FC had just fought back from two goals down to take a share of the spoils with Sheffield United, after late goals from young starlets Craig Bellamy and Chris Llewellyn. No doubt buoyed by the comeback, I met up with good friend (and soon to become real ale guru) Brian the Blade who took me to a proud looking establishment on Charles Street called the Yorkshire Grey, a mere 15 minute walk from the home team's Bramall Lane stadium. It was here that I had my first ever pint of real ale (Bombardier if you're asking) and I was hooked.

Match days would no longer simply be dedicated to watching my beloved Canaries; they would be inextricably intertwined with interesting and historical hostelries dispensing best bitters, milds, stouts, porters and pale ales. In truth, the liquid part of the day would often become the most enticing and enjoyable part of an afternoon sometimes spoiled by the 90 minutes of football on the field of play.

Sadly the Yorkshire Grey was demolished in 2006 to make way for a car park and we've witnessed the demise of many popular pubs in Norwich too in relatively recent times such as the Ferry Boat, Ketts Tavern, Dyers Arms and the Rosary Tavern. It's not my intention to focus on these closures though but to concentrate on the wonderful establishments that are still trading and continue to flourish.

THE REAL ALE CANARY is my odyssey through the pubs within the Fine City during Norwich's 2021/2022 Premier League season. A book that entertains and informs. It's purposely light-hearted and a joy of beer-musement that will inspire readers to get to the bar!

After all, Norwich is often referred to as the City of Ale, a go-to beer destination for incomers, as well as locals. There's always a fine range of appealing ales to tempt us in pubs being run by some outstandingly impressive individuals, proud of their hostelries and the products that they dispense.

In **THE REAL ALE CANARY** you'll read about:

- A well-respected landlady who's addressed thousands of people at a rally in London, looking for MP's to support the pub industry by scrapping the controversial beer tax escalator.
- One of the longest serving and most successful landlords in the City who bought the freehold of his pub back in 1993 from previous owners who had deemed it not to be economically viable.
- A much loved and charismatic landlady of the smallest traditional bar in Norwich who was a total novice in the pub trade before becoming licensee.
- What it takes to transform a run-down back-street corner local into a serial winning champion at a national level (hmmm, I wonder where that could be?)

By speaking to the pub owners and managers, the book offers an authentic and refreshing outlook. For the football meanwhile, it's the harsh reality of following a self-funded club on an unequal playing field, consisting of opponents owned by nation states and investment vehicles. In all, an unabashed celebration of all things Norwich, thoroughly recommended for anyone with a genuine love of beer and/or football.

It's also the book for you if you want to find out about:

- A pub where a coach load of boisterous Glasgow Celtic fans turned up unannounced, drank the pub dry....then relieved it of all its bric-a-brac.
- A bizarre bar, swathed with purchasable curiosities, where I unexpectedly became the proud owner of a 1930's Davall wall clock that had no glass, no pendulum, just the one single hour hand and a scratched and scuffed surface.
- The oldest hostelry in Norwich where you may receive a spooky tap on the shoulder from the playful ghost of Lord Sheffield.
- An eccentric, genius sculptor famed for his 3D murals that adorn the walls of a few city pubs in an early example of brewery branding. Cutting a mysterious figure he was never known to have posed for a photograph.

Cheers! and OTBC

Available for purchase in mid-August 2022 further information on **THE REAL ALE CANARY** can be obtained by contacting neil-collings@hotmail.co.uk

Pets in pubs



Norfolk Pub of the Year, the **Kings Head** on Magdalen Street welcomes dogs, like the very handsome Monty.

And it's one of only a few pubs lucky enough to be graced by the presence of a Pub Cat. We are truly humbled.



For those of us with four-legged friends, a pub which welcomes animals is always great news. We've visited a few pet friendly pubs and thought we'd share some Very Important Information about them with you. This is not a flagrant opportunity to just print lots of cute photos. Honest.

Dude is proud to welcome dogs and humans to the **Leopard** in Norwich. He can usually be found chasing his toys or curled up in his bed, but will also look after the bar when needed. In fact, he's had a beer brewed in his honour by Mr Winter's, called Chin on Bar. Also spotted here were Amber the red lab and Snoop the greyhound.



Over in Strumpshaw we met Gus, Lola, Lottie, Oscar, Caspar, Ruby and Jasper at the **Shoulder of Mutton**.



At **The Eagle** on Newmarket Road, we met Barney who belongs to one of the staff members. The pub has a full dog menu from Lily's Kitchen and is also a wholesaler for them. There are plenty of dog bowls in and outside the pub, and there are special areas inside the pub which are dog friendly.



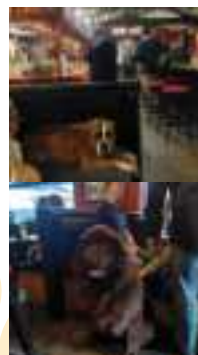
And it's not just dogs who are welcome!



But they all know it's Vinnie who's in charge.



Rosie lives at the **Rose Pub & Deli** on Queens Road. She has excellent lounging skills and loves hanging out with her greyhound pals from the rescue centre.



We met these gentle giants in **The Brewery Tap** in Norwich, where dogs of all sizes can join their people inside, in the covered outdoor areas or the sunny garden.

Our breweries also have four-legged friends, like Sky who lives at **Grain Brewery**.



And this super cute spaniel spotted at **Duration**.



Even more of our favourite pet friendly pubs around Norfolk...



The **Rose and Crown** in Snettisham is the winner of countless awards and with the old part dating back to the 14th century alongside a modern extension and garden, there is plenty for humans as well as dogs.

There are lots of walks around Shouldham Common and afterwards why not try the **Kings Arms?** This community owned, multiple winner of the West Norfolk Pub of the Year says 'the King's Arms is (well behaved) dog friendly so feel free to bring yours along when you visit. We always

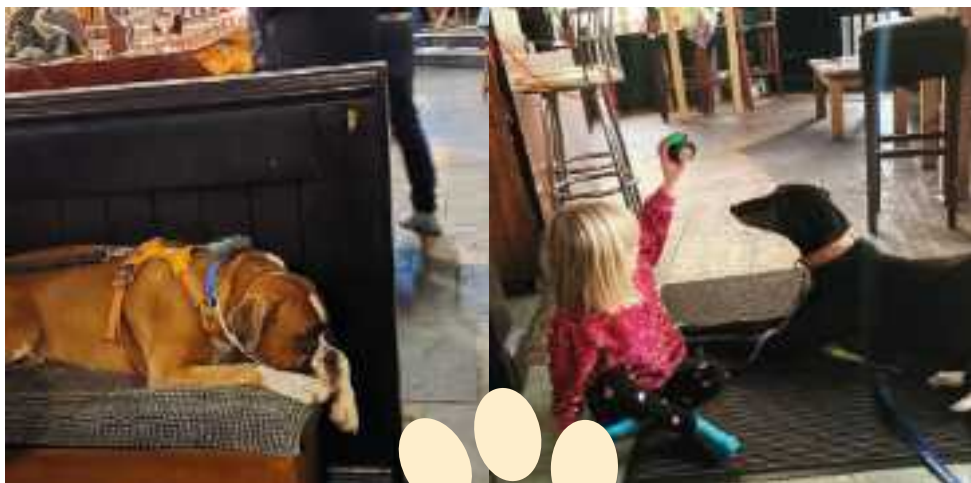
have bowls of water and a dog biscuit available for four-legged friends!'

The Eagle at Great Hockham is a fine village local with a great selection of cask beer. We can't recall ever going into the pub without meeting a dog... often the same one.

The Duck at Stanhoe is another award-winning pub in a pretty village surrounded by interesting walks. There are a couple of dog friendly tables in the bar area, which are very popular, so book in advance.

The **Live and Let Live** in Kings Lynn is one for the drinkers. Take your pooch around the nearby Walks and call in for a fine selection of good value beer or cider. Your dog will be welcome, but ask for a blanket if they're wet.

Why not take your dog on a break? The historic **Bell Hotel** in Thetford offers a number of pet friendly rooms (which must be pre booked) and is close to fascinating sites such as the ruins of Thetford Priory, which you can explore with your dog on a lead.



THE OLDE WINDMILL INN
Twist Swaffham & Watton - TP25 6AY
EVERY WEEK IS A 'BEER FESTIVAL' AT THE MILL
 WITH A CHOICE OF 4 PERMANENT & 2 EVER-CHANGING GUEST REAL ALES - EVERY WEEK OUR CUSTOMERS HAVE A CHOICE OF 10/12 DIFFERENT REAL ALES - OUR TARGET IS 20% LOCAL & 80% NATIONAL FAVOURITES.
 3 Bars 3 Dining Rooms 3 Family Rooms Patio & Terraces Remember - There is only one original Discover the difference - visit The Windmill
 Games Room & Conservatory Beer Garden & Play Area Tel: 01-760-756-232 Fax 01-760-756-400
 14 new En-Suite bedrooms Families Welcome Email: email@oldewindmillinn.co.uk
 Fine Food & Country Portions at reasonable prices. Web: www.oldewindmillinn.co.uk
 6 Real Ales 6 Lagers 6 Keg Beers & Ciders & incl. real ciders.



Regular Events

FREE Live Music every Sunday at 2:30pm

Monthly Regular events 7:30 or 8pm (all FREE)

Second Tuesday	Book Club
First Wednesday	Tin River (folk)
Fourth Wednesday	Gatehouse Lads (folk)
First Thursday	Open acoustic session
Second Thursday	Irish music session
Third Thursday	Story telling
Fourth Thursday	Traditional music & song
Fifth Thursday	Irish music session
First Friday	Traditional games night
Last Friday	Quiz night

Summer Hours (from 1 April)

Mon	11am-8pm
Tue/Wed/Thu/Fri/Sat	11am-10pm
Sun	11am-8pm

Summer Kitchen Hours

Mon	12-2pm
Tue/Wed/Thu/Fri/Sat	12-2pm & 5:30-8pm
Sunday	12-4pm

Plus loads of special one-off events!
 Check the website or social media for details

☎ 01508 830033
 ✉ info@thelocksinn.com
 🌐 www.thelocksinn.com
 📺 @thelocksinn



EAST COAST CRAWL

On the Coastal Clipper open top bus!

For our summer special, East Norfolk Branch are proud to bring you a pub crawl with a difference – using First Bus’s excellent bus services along the coast to visit some of the wonderful rural and village pubs north of Great Yarmouth.

The beauty of this trip is that it is very adaptable and villages or pubs can be added or missed to suit timescales. The route described is merely a suggested itinerary but can be changed to suit your individual needs. Most of the pubs listed do offer food in case you want to have a meal out during the day.

We started our journey off by picking up the bus outside the **PUB ON THE PROM** opposite Britannia Pier on Marine Parade. This is an ideal start point, less than 10 minutes walk from Market Gates, with the

option to go in for a drink before you set off.

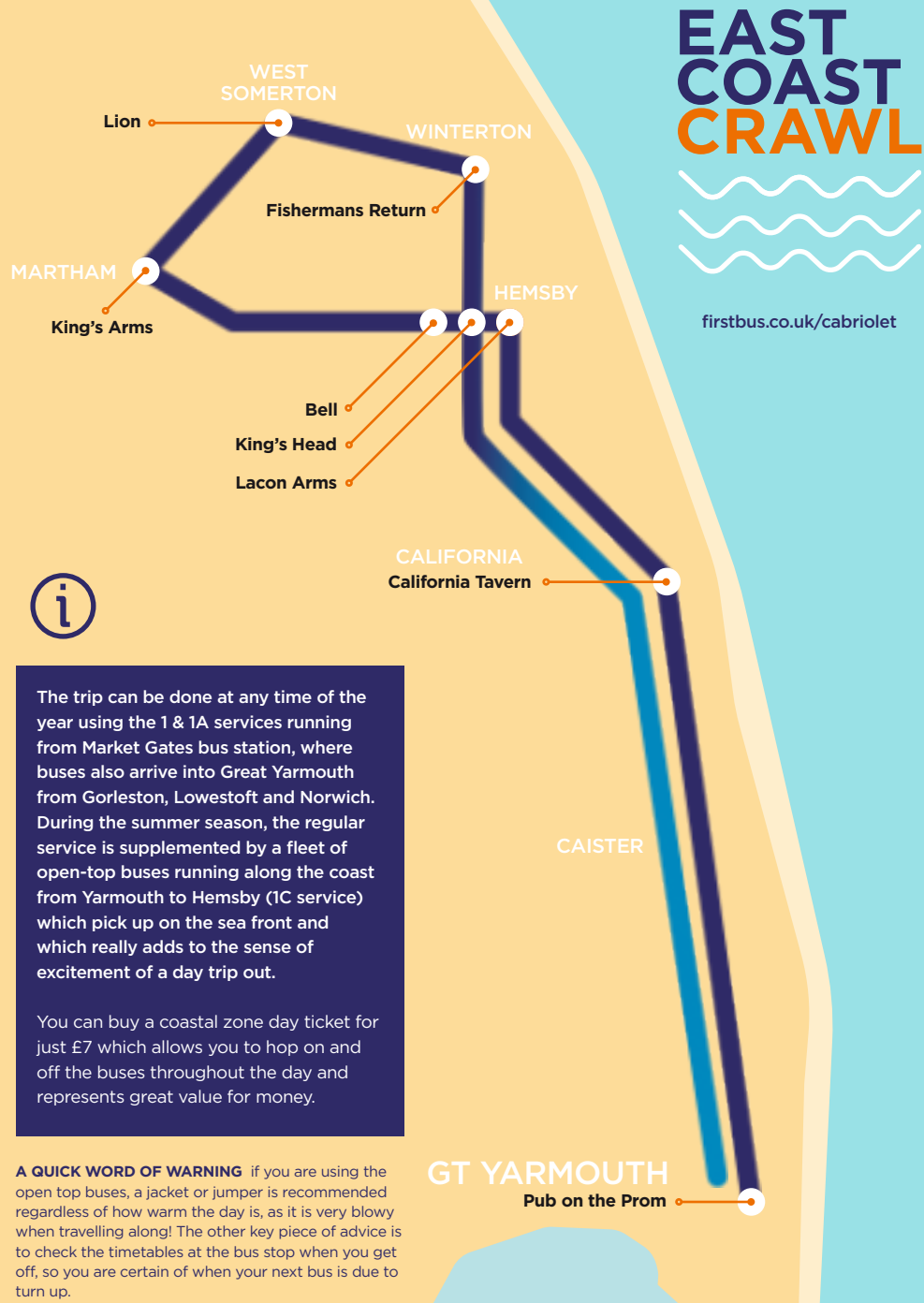
We took the bus to California for our first pub stop, the **CALIFORNIA TAVERN**. The pub is not visible from the bus stop, but you need to get off just after the entrances to the two holiday parks, before the bus turns left. The pub is very spacious, but cosy in the winter and offers a wonderful beer garden to enjoy in the summer. On our visit it was offering Mr Winter’s Vanilla Latte, as well as ciders from East Norfolk Cider, a local producer just a mile from the pub in



California Tavern

"Diss Mere Stitched Panorama" by Robert Pittman is licensed under CC BY-ND 2.0

enjoy
fab days out
by bus for less
explorer
day ticket
all buses | all city | all coast | all day
buy on app or on bus
£8 adult £6 5-19 £14 High5 group
from First EasternCounties
firstbus.co.uk/explorer



The trip can be done at any time of the year using the 1 & 1A services running from Market Gates bus station, where buses also arrive into Great Yarmouth from Gorleston, Lowestoft and Norwich. During the summer season, the regular service is supplemented by a fleet of open-top buses running along the coast from Yarmouth to Hemsby (1C service) which pick up on the sea front and which really adds to the sense of excitement of a day trip out.

You can buy a coastal zone day ticket for just £7 which allows you to hop on and off the buses throughout the day and represents great value for money.

A QUICK WORD OF WARNING if you are using the open top buses, a jacket or jumper is recommended regardless of how warm the day is, as it is very blowy when travelling along! The other key piece of advice is to check the timetables at the bus stop when you get off, so you are certain of when your next bus is due to turn up.



The Bell

Scrubby. Beers are constantly changing in this pub and are very often local ales.

Leaving California we then went on to Hemsby. There is an opportunity to carry on to the Hemsby Beach stop to take in this mini resort's attractions and a pint at the **LACON ARMS**, but we decided to get off at the preceding Hemsby Village stop. Heading towards and past the church we found the **BELL** which has a modern airy feel to the bar, offers a large courtyard garden and function room. Two real ales were on, both were extremely well kept.

Returning to the bus stop we caught the 1A to Martham to visit the **KING'S ARMS**, right by the bus stop, where we found three ales including St Peter's Gold Dust, and numerous ciders. The pub is spacious and has a traditional village pub feel to it, with a separate restaurant area. It is set on the village green complete with duck pond, and offers outside seating at the front



The Lion



Kings Arms

overlooking the green, as well as a lovely extensive garden to the rear.

To leave Martham we then took the 1 service (an hourly service which we then used for the rest of the journey) to the **LION** at West Somerton. The bus stops just past the pub, which offers a delightful courtyard garden, a very warm welcome and frequently changing local ales. We had the choice of three ales, Mighty Oak's Monarch and Red Jaspa, and Humpty Dumpty's Jubilee Mild, plus a cider by Norfolk Raider.

From here we then caught the next 1 bus to nearby Winterton on Sea, where a short walk from the bus stop along Black Street and turning right into The Lane you will find the **FISHERMANS RETURN**. An idyllic olde worlde pub on a quiet lane, among very cute thatched cottages. Here there were four ales, all by Woodfordes. There is a nice seating area to the front of the pub to soak up the village atmosphere.



Fishermans Return



Getting back on the bus we then returned to Hemsby, and walked approximately ½ mile up North Road to the **KING'S HEAD** where we found Fat Cat's Tom Cat in excellent condition. It was lovely to sit in the large beer garden to the rear of the pub.

Leaving here we returned to Yarmouth with the bus passing through Caister, which has several pubs, including the Gate, the Ship, the Never Turn Back, and Bramfords, which has superb food as well as serving a decent pint of ale. On arrival back into Yarmouth, the bus stops at Market Gates giving the opportunity to visit some of the excellent pubs in town, for those who haven't yet had enough to drink!

Overall a very enjoyable day trip out supporting some of our more rural pubs, which need as much support as possible in the current economic climate. We hope you enjoy it as much as we did.



King's Head



THE CALIFORNIA TAVERN



We specialise in Fine Traditonal Norfolk Ales
Including Woodfordes, Moongazer, Wolf Ale, Humpty Dumpty, Barsham and More















Have you been to California?
01493 730340
California Tavern California, Great Yarmouth NR293QW
www.californiatavern.co.uk email californiataver@btconnect.com



SIR TOBY'S BEERS

Stalls 182 and 183

Craft Beer Shop & Market Bar
Local Real Ales, Ciders, Wines & Spirits
European & US Imports
Subscription Beer Box Service
Deliveries in Norfolk



sirtobysbeers.co.uk



THE STANFORD ARMS

94 Stanford Street, Lowestoft

Craft Beer & Real Ale Pub
20 Cask & Keg Beer Lines
Live Music, Festivals & Events
Beer Garden
Woodfired Pizzas



thestanfordarmslowestoft.co.uk

YOUR FESTIVAL GUIDE

July to October 2022



NORWICH AND BEYOND PUB FESTIVAL

Launching on 22 July and running until 29 August, Norwich and Beyond Pub Festival is back for its second year. Featuring 130 pubs and producers it's even bigger, with 8 colour-coded zones to explore.

Enjoy a drink in pubs across the Norwich & District CAMRA branch area, from Beeston to Blofield, Erpingham to Eaton. Collect stamps to claim your souvenir wristband for each zone, and claim a special prize if you visit all 81 pubs.

Breweries from around East Anglia have donated beer to the pubs, and many will be organising events during the festival. We've also got the region's best real cider makers involved this year for our new Cider Zone. A huge thank you to all our sponsors for making the festival possible.

Each zone has its own map with details of the pubs taking part. You can find their Web and social links, letting you check their up to date info and opening times.

Pick up a Festival Guide in participating pubs or find out more:

facebook.com/NorwichPubFestival
[Instagram NorwichPubFestival](https://www.instagram.com/NorwichPubFestival)
[Twitter @NorwichPubFest](https://twitter.com/NorwichPubFest)

Beer Festivals at a glance

July

Wednesday 13 July to Sunday 17 July

Heathlands Beer Festival

Heathlands Social Club & Community Centre,
Woodbastwick Road, Blofield Heath

Friday 15 July to Sunday 17 July

Beer Fest! 2022

The Chequers, Stratton Road, Hainford
facebook.com/TheChequersHainford

Friday 22 July to Sunday 24 July

Not the Reedham Beer Festival

Humpty Dumpty Brewery, Reedham
facebook.com/humptydumptybrewery

Friday 22 July to Monday 29 August

Norwich and Beyond Pub Festival

80+ pubs around the Norwich area
facebook.com/NorwichPubFestival

Thursday 28 July to Saturday 30 July

25th Kings Lynn Beer Festival

Stuart House Hotel
stuarthousehotel.co.uk

Saturday 30 July to Sunday 31 July

Mellis Music and Beer Festival

Railway Tavern, The Common, Mellis, Eye
facebook.com/288925944452165

26-28TH AUGUST 2022

CARLETON RODE SOCIAL CLUB
PROUDLY PRESENTS

RODEFEST

NORFOLK'S FINEST BEER FESTIVAL

FRIDAY 26TH AUGUST (3pm - late) SKASOALS
SATURDAY 27TH AUGUST (12pm - late) NIGHTLIFE PLUS SUPPORT
SUNDAY 28TH AUGUST (12pm - late) URBAN COOKIE COLLECTIVE
THE SQUIRRELS
SONS OF MARK
80s, 90s & 00s OUT OF SPACE LIVE DJ SET

FREE ENTRY 3 DAY BEER FESTIVAL

REAL ALES - DRAUGHT BEERS - CIDER - GIN BAR
LIVE MUSIC - DJ SETS - COMEDY ACTS
FUN FOR ALL THE FAMILY

Carleton Rode Social Club, Mill Road, Carleton Rode, Norwich, NR16 1NG

Rodefest

Carleton Rode Social Club have a very exciting weekend planned for RodeFest from Friday 26 to Sunday 28 August. There'll be live music each afternoon and evening, including a headline appearance from dance act Urban Cookie Collective, who had huge hits in the 90s including The Key, The Secret. Add in some comedy acts and DJ sets, it's sure to be a great time for all the family.

With real ale, draft beer and cider, plus a gin bar, there's plenty of choice. With a festival marquee outside, they're prepared for any weather. And it's free entry during the whole 3 day festival, so get down to Carleton Rode and enjoy a fun filled bank holiday weekend!



August

Thursday 4 August to Saturday 6 August

Annual Summer Beer Festival
Angel Inn, Sallow Lane, Larling
angel-larling.co.uk

Friday 5 August to Saturday 6 August

North Walsham Beer Festival
The Memorial Park, North Walsham
facebook.com/NorthWalshamBeerFestival

Friday 5 August to Sunday 7 August

Holbeach Music and Beer Festival
King's Field, Fen Road, Holbeach, Lincs
holbeachmusicandbeerfestival.co.uk

Friday 5 August to Sunday 7 August

11th Ranworth Beer Festival
Ranworth Village Hall, Broad Road, Ranworth
ranworthvillage.com

Friday 12 August to Sunday 14 August

Star Fest Beer, Cider and Gin Festival
Star Inn, School Road, Lessingham
facebook.com/thestarinnlessingham

Friday 19 August to Sunday 21 August

MuttonStock
Shoulder of Mutton, Norwich Road, Strumpshaw
facebook.com/shoulderofmuttonstrumpshaw

Tuesday 23 August to Saturday 27 August

43rd Peterborough Beer Festival
The Embankment, Peterborough
pborbeerfest.camra.co.uk

A Jolly Shanty Festival

The first Brancaster Staithe Shanty Festival is being held at The Jolly Sailors on Saturday 17 and Sunday 18 September.

Twelve 'Shanty Groups' from countrywide destinations will perform their versions of seafaring shanties in their quest to entertain and keep the 'sea shanty' songs alive. Local real ales, home cooked food and much merriment will complete the picture.

jollysailorsbrancaster.co.uk



Thursday 25 August to Tuesday 30 August

The Annual Ale, Cider, Craft and Music Festival

Duke of Wellington, Waterloo Road, Norwich
facebook.com/dukenorwich

Friday 26 August to Sunday 28 August

RodeFest

Carleton Rode Social Club
 Mill Road, Carleton Rode, Norwich
facebook.com/rodefest20

Friday 26 August to Monday 29 August

Kings Arms Beer Festival

Kings Arms, Northgate Street, Great Yarmouth
facebook.com/kingsarmsgreatyarmouth

Friday 26 August to Monday 29 August

August Bank Holiday Beer Festival

White Hart, Church Street, Ashill
ashillwhitehart.co.uk

Saturday 27 August to Monday 29 August

Star Wing Beer Festival

Star Wing Brewery, Redgrave, Suffolk
starwingbrewery.com

September

Friday 2 September to Saturday 3 September

Wymondham Rugby Club 50th Anniversary Beer Festival

Wymondham RFC, Barnards Field, Bray Drive, Wymondham
facebook.com/wymondhamrfc

Friday 16 September to Sunday 18 September

Elgood's 10th Beer Festival

Elgood's Brewery, North Brink, Wisbech
elgoods-brewery.co.uk

44th Norwich Beer Festival

Once again it's time to look forward to Norwich Beer Festival, being held at The Halls from Monday 24 to Saturday 29 October 2022.

The Festival is open lunchtimes and evenings, plus all day Saturday, and there's live music on Thursday, Friday and Saturday.

CAMRA members get free entry to all sessions, so don't forget your membership card. If you're not a member you can join at the festival by chatting to our membership team when you arrive.

There's many different areas of the festival to discover. On arrival, start by picking up a programme, buying your pint or half pint glass and drinks tokens, then take a look around.

Over the week more than 400 beers will be available, including golden ales, bitters, porters and stouts. We'll have gluten free and vegan beers, plus a selection of beers from wooden casks.

The World Beer Bar in the marquee has a large range of keg and bottled beers. Or for something a little unusual and different, why not try the Curiosity Bar?

If beer isn't for you, we have a large range of ciders, perries, local wines and mead, along with soft drinks. Food will be available from our caterers during all sessions.

The Products stand has clothing with this year's festival logo and other collectibles. And you can get your glass personalised by our engraver.

Norwich Beer Festival is run solely by volunteers, and we're looking for new people to learn the skills involved in setting up and taking down the festival. Keep an eye on our social media for the volunteering form out later in the summer.

[Facebook.com/norwichbeerfestival](https://facebook.com/norwichbeerfestival)

[@Norwichbeerfestival](https://twitter.com/Norwichbeerfestival)

We look forward to seeing you in October!

Saturday 17 September to Sunday 18 September

First Brancaster Staithe Shanty Festival

Jolly Sailors, Brancaster Staithe
jollysailorsbrancaster.co.uk

Monday 26 September

East Norfolk CAMRA Real Ale Competition

The Drill House, Great Yarmouth
 To get involved as a judge, email paul@tombstonebrewery.co.uk

October

Monday 24 October to Saturday 29 October

44th Norwich Beer Festival

The Halls, St Andrews Plain, Norwich
norwichbeerfestival.org.uk



A PINT ON SITE CAMPING PUBS

If you're looking for somewhere to pitch up or park up overnight and enjoy a pint, check out our guide to camping pubs across Norfolk.

Please contact the pubs directly before visiting to check opening times, camping facilities and food/drinks available



For an idyllic coastal location, you can't beat the **NEVER TURN BACK** in Caister-on-Sea.

Situated right next to the beach, among the marrams, the pub car park has space for a few motorhomes or campervans for overnight stays. You need to call to book in advance - it gets very busy especially during the summer - but there's no charge to stay.

This is overnight parking, rather than camping, as there are no facilities apart from a cold water tap and use of the toilets while the pub is open.

The pub and beer garden are dog friendly, but keep them on leads, and if they want a run the beach is just a stone's throw away!

The pub serves delicious home cooked meals and

you're very welcome to dine during your stay. Management asks that you book a table in advance, as they'd never assume you're planning to eat there, so they don't book one automatically.

[facebook.com/neverturback](https://www.facebook.com/neverturback)

The **ANGEL INN**, Larling, offers caravan and camping facilities from April to September on Angel Meadow. This country meadow of 4 acres overlooks woodland and the Old Coaching Inn is ideally situated for visiting The Brecks or walking in Thetford Forest. Pitches are available for tents, caravans or motorhomes, and the site offers shower and toilet facilities, electric hook up and a dog walking area.

Camping for their popular Beer Festival in August is available for pre-bookings only. Food is served in the pub Sunday to Thursday from 12pm until 8pm, Friday and Saturday from 12pm until 9pm.

[angel-larling.co.uk](https://www.angel-larling.co.uk)

REEDHAM FERRY INN is a waterside pub and restaurant with Archers Touring Park on site. Booking is essential and they accept tents, campervans, motorhomes under 7.5 metres and



caravans. The chain ferry crosses here, taking pedestrians and vehicles over the River Yare, and providing an interesting view to enjoy from the pub's riverside beer garden.

[reedhamferry.co.uk](https://www.reedhamferry.co.uk)

Another coastal spot for those wanting to spend the night under the big Norfolk sky, is the **LIGHTHOUSE INN** at Walcott. On the field next to the pub, Lighthouse Camping offers a brand-new touring campsite, with pitches for 5 caravans or motorhomes and 10 tents.

All caravan or motorhome pitches are hardstanding, and include electric, water and free wifi. Some of the camping pitches also offer electric. They welcome well-behaved dogs on leads, with no extra charge.

[lighthousecamping.co.uk](https://www.lighthousecamping.co.uk)




Walnut Tree Shades
Old Post Office Court,
Norwich, NR2 1NG
01603 622910

[@walnut.treeshares.7](https://www.facebook.com/walnut.treeshares.7)
[@TheWalnut_Tree](https://www.twitter.com/TheWalnut_Tree)

Live Music
Good Food
Local Ale



www.thewalnuttreeshares.com



BEERS OF EUROPE
NOT JUST BEER. NOT JUST EUROPE.

BRITAIN'S BIGGEST BEER SHOP

OVER 2000 UK & INTERNATIONAL BEERS

OPEN EVERYDAY - VISIT THE SHOP OR BUY ONLINE



www.thewarehousepubs.co.uk
NOW OPEN NEXT DOOR

GARAGE LANE, SETCHEY, NORFOLK PE33 0BE • TEL: 01553 812000

WWW.BEERSOFEUROPE.CO.UK

JOURNEYS IN JUDGING

For the East Anglia Regional Pub of the Year

The competition is judged by CAMRA members, meaning someone from each branch visits all six pubs and scores them in eight categories. To become a County Pub of the Year, you must be a pretty decent pub, with great beer/cider, atmosphere and everything else that makes a pub nice. So all we need to do is visit six decent pubs and give some scores. Simple!

OK, so where do we start? The County Pubs of the Year 2022 are

BEDFORDSHIRE

March Hare, Dunton

CAMBRIDGESHIRE

Queen Edith, Cambridge.

ESSEX

Railway Arms, Saffron Walden

HERTFORDSHIRE

Land of Liberty Peace & Plenty, Heronsgate

NORFOLK

Kings Head, Norwich

SUFFOLK

White Horse, Sweffling

Let's look them all up to see where they are and plot them on a map.



After an enforced two-year break from the Pub of the Year, we're pleased to welcome back the East Anglia Regional competition for 2022. As in previous years, six counties each put forward their County Pub of the Year.



Our Norfolk winner, the Kings Head is an easy one for us to get to! But we still need to make a specific visit for judging and ideally not let the staff know when we're doing it. Shhhhh.

Then it becomes a bit more of a challenge... as we're in the most easterly part of

East Anglia, we've got a long journey even to the next closest pub. But everyone judging from the other counties has to come to Norwich as well, so it's not a disadvantage. It just needs a bit of planning.

The obvious answer is for someone to drive between the other five pubs, with a couple of passengers who can drink beer. The total journey time for this trip would be 6 hours 45 minutes, but that's before you include any time in the pubs! So let's allow the absolute minimum of 30 minutes per pub, plus 30 minutes to stop and eat, which adds another 3 hours. So that's a 10 hour day, with not much time out of the car. Hmmmm.

How about public transport? Three of the pubs are close together near Cambridge, so we could definitely do a combination of trains and taxis for those.

That leaves two pubs which couldn't be further from each other if they tried! The Hertfordshire pub is close to London though,

so let's try to combine it with a trip we've already got planned. And Suffolk isn't too far from Norfolk is it? Maybe we can just drive down there one evening? Great, we have a plan! Kind of.

Better check the opening times of the pubs so we don't arrive too early or too late. Things are looking a little tricky as there's some limited hours, but we think we can make it work. And when do we need to do this by? 31 July? OK...

The guidance for judges makes it clear that this is not a competition of county verses county; it is an exercise in determining the best pub in East Anglia. We're asked to score all pubs in a fair and consistent manner, based on our visit, not the views of other people. And our scores can only be accepted if we score all six of the pubs.

Drinking great beer in great pubs should never be a chore, so despite our logistical challenges, we're approaching it in a positive way and looking forward to some brilliant drinking ahead!

To record our scores, we simply use our CAMRA membership number and password to log into a special site set up for the competition. The six pubs are listed with a photo and WhatPub link for each pub giving details of opening hours and how to get there. Scores are out of 10 for each category. A total score out of 120 will be calculated once we've entered all 8 scores for a pub.

The categories are as follows: (weightings in brackets)

- **Quality & Condition of the Product** (x2)
- **Promotion and Knowledge of Product** (x2)
- **Cleanliness & Staff Hygiene** (x2)
- **Service, Welcome & Offering** (x1)
- **Style, Decor & Furnishings** (x1)
- **Community Focus & Atmosphere** (x2)
- **Sympathy with CAMRA Aims** (x1)
- **Overall Impression** (x1)

There's more detail on what we should be looking for in each category, which is helpful. For example, we're not judging if we like a particular beer, but whether it's in good condition, served correctly by welcoming staff, in a clean, comfortable pub.

The deadline for submission of scores is midnight on 31 July 2022, so there's still time to get to all six pubs... if you're quick!

Regional Cider Pub of the Year



As well as the overall East Anglia competition, members have been judging our cider pubs.

We're very pleased to announce that the **Queens Head in Allens Green**, is this year's Regional Cider Pub of the Year. A huge congratulations to them!

We had 9 judges from 5 counties (Cambridgeshire, Essex, Hertfordshire, Norfolk and Suffolk).

The County Cider Pubs of the Year are:

BEDFORDSHIRE

Sir William Peel, Sandy

CAMBRIDGESHIRE

Drayman's Son, Ely

ESSEX

Compasses, Littley Green

HERTFORDSHIRE

Queens Head, Allens Green

NORFOLK

White Lion, Norwich

SUFFOLK

Walnut, Stowmarket



GOLDEN STAR MORRIS AT THE CITY OF ALE

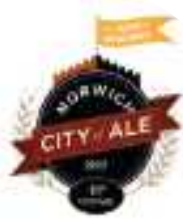
With one thing and another, it had been three years since Morris dancers took to a City Of Ale ale trail.

2022's seven trails have been named after the various trades of the Norwich token issuers. Tokens were issued from around 1650 by tradespeople as a substitute for official coinage, of which at the time there was not enough to go around.

Golden Star had chosen the Vintner Trail for this year's tour. The Vintner (wine-seller) tokens were issued by one Richard Freeman who lived on Dove Street. Appropriately we started at The Vine with a swift opening half.

It was then the Maid's Head Bar where most chose between the eponymous best bitter and Lacon's Cove, a 3.9% pale ale. The pavement close-by next to Norwich Cathedral's Erpingham Gate is great for dancing and we entertained (well that's what we call it) a good crowd.

Next, the Wig and Pen, welcoming as ever (particularly with the Humpty Dumpty Little Sharpie on the bar) and another great location for us to dance; plenty of space with interesting historic buildings as a backdrop. With three good performances under our belts we welcomed the extra liquid refreshment donated by the management - thank you!



The Merchants' House followed and time for a pause in the dancing to focus more on the available beers. Moon Gazer Jumper and Tindall's Mild featured here, as well as a very good Norfolk Village Green dry cider.

After the lunchtime break we resumed our work(?) at the furthestmost point of the tour, the Malt and Mardle. New to some of us but a lively micropub with some great beers. A standout was Heidrun, by Three Hills Brewing.

Retracing our steps, we dropped into the Kings Head, a regular spot for many of us.

After a couple of dances it was the second beer of the day from the Humpty Dumpty brewery (Broadland Sunrise I think) and it didn't disappoint. After a cheery wave from the staff, we were off across the Wensum with our day's work nearly over.

The Ribs of Beef is another favourite pub and, after dancing a set on Fye Bridge, we settled down with the satisfaction of a job well done, some of us enjoying the Vanilla Latte; a great milk stout (4.5%) from Mr Winter's.

Suitably recovered we made our way back to the ever-accommodating Vine to collect our badges and to try to remember the ale we started the day with!

■ JD

LOLLARDS PIT

10% DISCOUNT FOR CAMRA MEMBERS

GOOD BEER GUIDE 2021 WE'RE IN IT

Up to 6 Ales • Real Ciders • Games Room • Beer Garden & Heated Smoking Area

The Gatehouse Pub

CELEBRATING 25 YEARS AT THE GATEHOUSE!

FOUR REAL ALES

SATURDAY Live Music 8:30-11:30pm

SUNDAY Folk Music from 8pm

OPEN: Mon - Thurs 12 - 11
Fri - Sat: 12 - 12 • Sun: 12 - 11

WOODFORDE'S BREWERY

BEER OF NORFOLK SINCE 1981

WHERRY Amber Ale

REEDLIGHTER Pale Ale

NOG Dark Ale

VOLT Premium IPA

BURE GOLD Golden Ale

NELSON'S Bitter

www.woodfordes.com | Facebook | Twitter | Instagram @woodfordesbeer

Bar Billiards

If you're out and about in Norwich pubs (or a handful of county pubs), you will no doubt have seen a group of people with cues clustered round what looks like a small pool table, but with the holes in the middle of the table, and pins or mushrooms in front of them. I'm describing a bar billiards table, used to play the game of the same name, which apparently came from France, and became popular in pubs in the 1930s.

IN Norwich there are five pubs with bar billiards tables at the time of writing: the Kings Head on Magdalen Street, the White Lion on Oak Street, the Coach and Horses on Bethel Street, and the Rose Inn on Queens Road. The table at the Golden Star, Colegate, was removed during the pandemic to allow for more seating, but is now back in the pub.

All the tables are slightly different, as some of the tables were designed to play with 3 pins, and are therefore longer,

while the 4-pin ones are shorter. The 3-pin game is also popular in York, the only other city we know of where bar billiards tables are common.

Over the years some tables have moved around a bit - the Cottage on Silver Road used to have one, which was relocated to the Coach and Horses after the pub changed hands a few years back, and the Plasterers also used to have a table which was removed as the pub needed the space.

Each pub has at least one team who played regularly in the Norwich Bar Billiards League until the pandemic interrupted things. The league started about 15 years ago when the Kings Head got their table and started playing matches against the Rosary Tavern on Rosary Road, unfortunately long gone. Not long after the Golden Star joined and, bit by bit, more pubs decided to have a table and more teams appeared.

The League restarted this spring, with the tables and teams that have survived: 12 teams in total, with 2 divisions of 6 teams. There is also a team from South Walsham, which started in the Ship when (ex-Rosary team regular) Steve Lucas had it, and moved to the Village Hall when the Ship changed hands, as the pub team loved the table and getting involved in the league.

Each team usually comprises six people, and a match consists of 6 singles games, drawn from

a hat, and 3 doubles games. With each game taking around 15 minutes, a match will usually take about 3 hours, often with a break for pizza in the middle.

With 12 team members plus friends coming into the pub on what would otherwise be a quieter night, it's no wonder the game is popular with landlords!

Before the pandemic, Norwich Bar Billiards League, organised by Dave Brewer, also organised a knock-out singles tournament at the start of the year, and a Cup and plate tournament alongside the league. The cup has recently restarted and Dave hopes to restart the other competitions soon.



So, if you have never played, what's it all about?

The aim of the game is to score as many points as possible, which involves potting balls, especially the red which counts double, without knocking any pins down.



- To start, you'll need a 50p or £1 coin to release the balls - be gentle, some of these tables are over 100 years old! The timer starts immediately, and you'll have about 15 minutes play, after which potted balls don't return.

- The 4 mushrooms (pins) should be positioned in front of the four holes forming a diamond in the middle of the table.

- The first player places a white ball on the 'D' and the red ball on the spot between the 'D' and the front mushroom - the most dangerous one: knock it over and you lose your entire score!

- They then strike the white ball to hit the red, and hopefully pot one or both. If they pot a ball, without knocking over a mushroom, they play another ball from the tray, always placing it on the 'D'.

- You'll see the values of each of the holes on little brass or plastic plates - anything from 10 points for the two outside holes at the back of the table, to 200 for the hole behind the first mushroom.

- Add the score up as the break goes on, but don't put it up on the scoreboard at the back until the break comes to an end, as knocking over a mushroom means it is all lost!

- If a ball crosses the red marked area or the D, you lose the points you made in that break.

- If you knock over the mushrooms at the 50 and 100 point holes, you lose the points of that break.

- If you knock over the mushroom guarding the 200 points hole, you lose all your points for the entire game.

- If you run out of balls, because they are all on the table, or because the timer stopped after 15 minutes, the nearest ball to the player is the one to use first.

- If you are doing well on your break, and you want to save your points before you knock something over, you can 'bank' your score by just gently hitting another ball without potting it.

These are the basic rules, for more information and social media links please visit norwichbarbilliards.co.uk

The Leopard

4+ real ales, 4+ traditional ciders
6+ craft beers on tap
Great selection of craft cans & bottles

Wood burner & beer garden

98-100 Bull Close Rd, Norwich NR3 1NQ
Tel 01603 631111 • www.leopardpub.co.uk

BRUHA

BRUHA
BRUHA
BRUHA

CREERS

WWW.BRUHABREWING.CO.UK

The Murderers Norwich

Scan QR To Find Out More About These Landlords

- Building Dating Back to 1530
- Traditional Pub since 1841
- Family Owned Free House
- Home Cooked Food
- 10 Cask Ales
- 2 Real Ciders
- Locally Brewed Lager
- National Award Winning Pub
- The Best Live Sport
- Outside Seating
- Fully Air Conditioned
- Well Behaved Dogs welcome
- Gluten Free & Vegan Beers always available

1922

www.themurderers.co.uk

Boudicca Brewing Co.

Vegan Real Ales from Norfolk

- Queen of Hops (3,7%)
- Three Tails Bitter (3,9%)
- Golden Toric (4,3%)
- The Red Queen (4,5%)
- Spiral Stout (4,6%)
- Prasfo's Porter (5,2%)

@boudiccabrewing BoudiccaBrewingCo 07864 321733
www.boudiccabrewing.co.uk

THE SUFFIELD ARMS



A restoration story

Situated in a rather quirky location is the newly reopened Suffield Arms. The pub is in the Parish of Thorpe Market next to Gunton railway station on the Bittern Line. So the Suffield Arms is not in Suffield village and the railway station is not in Gunton but named after the nearby estate!

The Suffield Arms was originally a row of cottages built for the estate workers, but relocated to its present location in 1886 by Lord Suffield (Charles Harbord, 5th Baron Suffield), whilst the station was built in 1876 for his use. He was a close friend of the Prince of Wales (the future King Edward VII) and a major investor in the East Norfolk Railway that built the line!

The new pub was granted a licence in 1889, it soon became part of the Steward & Pateson

Brewery and passed to Watney Mann, when many breweries were swallowed up by rivals during the 60s and 70s. In 1977 it was sold as a freehouse, trading until March 2011 when last orders were called. After the pub fell into disrepair, the premises licence was revoked and planning permission was given for conversion to a residential dwelling and holiday cottage. It seemed that the pub would end up as another house!

But in stepped Ivor Braka, a London art dealer and owner of the nearby Gunton Arms. This too has royal connections as it was where the Prince entertained his mistress, Lilly Langtry! Mr Braka bought the building in 2016 and submitted plans to return it to a public house stating...

"Mr Braka is very aware of the prominent gateway position the pub holds and is determined to see it re-established as a valued place and destination for the local area."

Work was started and four further planning applications were submitted in connection

with the work. Finally in 2021 a premises licence was granted and the pub reopened, over 10 years since it last served a pint of beer!

The original building has been kept and added to with a number of extensions. It has been designed in a 19th Century style, complete with panements (reclaimed floor tiles), William Morris curtains and Anaglypta on the ceiling. Paint has been deliberately aged to enhance the atmosphere. The main bar area has a pool table and an array of five handpumps serving local beers (on my visit from Wildcraft, Woodfordes, Lacons and Grain) and is reserved for drinkers only which helps to give it a local feel.

Upstairs is the saloon bar where you can indulge in cocktails and mocktails. It has a relaxed atmosphere with plenty of pictures, etchings and prints by such artists as Hogarth, Grasso and Goldman. The staircase also leads to the newly created roof terrace.

The rest of the Suffield Arms is a new build that houses the conservatory-style restaurant serving Mediterranean food, tapas and pizza. Outside, a brick and flint wall has been built which helps to disguise the extended building from the road. Everywhere you look, you will find an array

of artwork too numerous to mention here. On my visit I was given details of the history and artwork on display. If you arrive in the afternoon, you can grab a beer and wander round the building admiring the work on

show. It may not all be to your taste but it is well worth a look!

In conclusion, the original planning application for conversion to a dwelling contained these words...

"In the depressed economy of now and the future, and with the Government encouraging the change of use of redundant properties, it would be a good time to breathe new life into this attractive property."

Well, we have seen new life breathed into the property but luckily not at the expense of becoming yet another lost pub. With the right investment and enthusiasm new life can be breathed into any threatened local.

The Suffield Arms can be visited by public transport - Greater

Anglia trains from Norwich or Sheringham/ Cromer stop on a regular basis. The station is on the other side of the road to the pub! The original station building is now a private residence retaining many railway features. The Gunton Arms is a 40 minute stroll away, so on a nice day you could visit them both and enjoy the Norfolk countryside too.

■ RICHARD DIXON



NORWICH AMATEUR BREWERS FESTIVAL

11.06.22



On a warm, sunny Saturday afternoon in June, the Coachmakers Arms in St Stephens Road played host to the latest Norwich Amateur Brewer's Festival. And what a gem of a festival it was!

Over 24 top-quality beers, all of which would have been new to you, were on offer throughout the day. Tutored tasting sessions; demonstrations of home brewing techniques; the presentation of Eastern Edge, Adnams new collaboration with the American Sierra Nevada company, and a blind Triangle Taste Test with festival sponsor Wildcraft Brewery, all added to the enjoyment of the day.

The beers, all of which were created by enthusiastic and knowledgeable amateur brewers from Norfolk, ranged across the whole spectrum of types and strengths.

It's quite amazing how flavourful a 1.6% pale ale can be (Easy Drop Super Session Pale, by Rich D) and how luxurious yet exotic a 7.2%

Neipa can taste (YOWzER, by Chris W) My personal fondness for dark beers was more than satisfied by an Old Bungarian Milk Stout at 5.5% (by Danny B) and The Fairy's Choice at 4% (by Florin AH) while at 5.7%, Speculation (by John L), showed just what a Strong Bitter should taste like.

And in between, there were fruit beers (Belgian and otherwise), best bitters, dark lagers, brown ales, wheat beers, beers amber pale and blonde, and altogether enough choice to keep you going through to midnight.

It is beyond the scope of this brief article to list all of the beers on offer on the day but suffice it to say that they were all of the very highest quality. Also on offer were bottles of Wild Rainbow, a golden beer



specially created by Wildcraft Brewery working in collaboration with the Norwich Amateur Brewers club to raise funds for the Norfolk and Norwich University Hospitals Charity.

The atmosphere throughout the day was buzzy and friendly with the enthusiasm and energy of the many brewers present rubbing off on everyone. "This festival is our club's shop window... whilst we are here to raise money for charity, the heart of what we're doing is rooted in our love of brewing and beer and we want to share that love with CAMRA members and the people of Norwich." Said Martin Haworth, Committee member Norwich Amateur Brewers.

Mission accomplished, I would say. If you were not able to make this particular pint-sized powerhouse of a festival, then keep your diaries open and ready for next year. Definitely one to catch!

■ MICHAEL RYAN



MUSIC LIVE 4U

SOLO SINGER ENTERTAINER

GLEN COOPER

PERFORMS GOLDEN CLASSICS

60s 70s 80s

MUSIC LIVE

Genres of Soul, Motown, Rock 'n' Roll

Rat Pack, Country & Glam

Artists such as Barry White, Elvis, Neil Diamond, Sinatra, T Rex, Bee Gees

And much more..



AVAILABLE FOR VENUES & FUNCTIONS

Whether a Club, Pub, Special Occasion Event, Hotel, Village Hall Restaurant, Wine Bar or Dinner Ball

(GC CAN SING FOR ALL)

For Enquiries & Bookings Call or email Glen direct on

07884 431000

glencooper@gmx.co.uk



GREAT YARMOUTH BEER AND CIRCUS FESTIVAL

Photographs by Marcin Rodwell

Making a triumphant return at the start of June 2022, the festival once again brought circus, street arts and music to Great Yarmouth.

The Drill House was alive with fun, colour and a wonderful atmosphere over the four days, as an eclectic variety of performers took to the stage.

The bar, run by Lacons, was well stocked with beers from 17 East Anglian breweries, and local businesses sponsored the casks. Volunteers, including some from East Norfolk

CAMRA helped make sure over 900 thirsty visitors were well taken care of.

Emily Phillips, festival organiser comments: 'I could not have pulled the event off without the help and support of East Norfolk CAMRA, Lacons Brewery, Acle Winter Beer Festival crew, the local breweries, trustees of Out There Arts plus the amazing volunteers and the Great Yarmouth community.'

She continues with: 'I could barely walk on my feet post-event, but it was all worth the pain. I am excited for the 2023 edition already!'

**2400⁺
PINTS
SOLD**

**580⁺
PINTS OF
CIDER
SOLD**

**900
ATTENDEES**

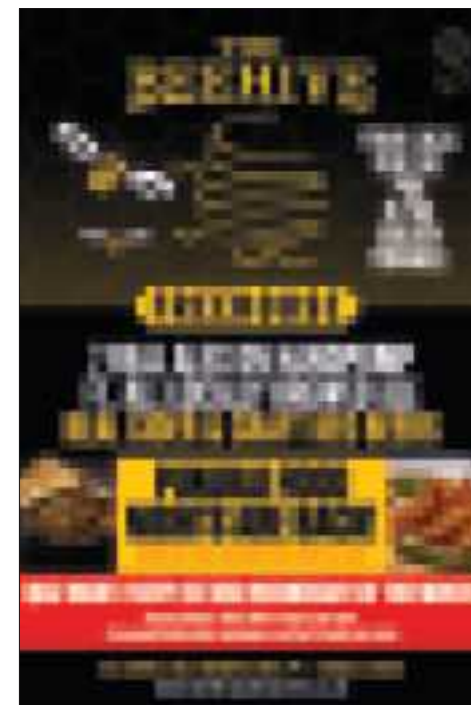
**65
VOLUNTEERS
TOOK PART**

**£200
DONATIONS
COLLECTED**

**42 11
EVENT HOURS BANDS**

**12
CIRCUS
SHOWS**

**100%
POSITIVE
FEEDBACK**



MoatHouse

SPECIALIST BOX SUPPLIERS TO THE BREWERY TRADE AND WINE MERCHANTS

- Range of Standard Bottle Packs
- Small Quantities
- Available Plain or Bespoke Print Design 1 or 2 colours
- 2,3,4 and 6 Bottle 500ml and 750ml, 3 x 330ml
- Produced from Recycled Material

Contact: David Tack, Moat House Products,
Cambs PE28 3BY • T: 07979 784429

E: moathouseproducts@gmail.com

www.moathouseproducts.co.uk



£30*
real ale
vouchers

*Joint members receive £40 worth of vouchers

Discounts on pints with Real Ale Discount Scheme

Branch magazine



Campaign for Real Ale

Volunteer at beer festivals or local branch

Vote for best pubs

Vote for champion beers

Meetings and socials

Brewery tours

Local Pub discounts

Lobby MPs

Save Pubs and industry jobs

Campaign for great beer and pubs

Reduce tax on beer



Membership Benefits

CAMPAIGN

BEER magazine

Beer Festivals Across the UK

What's Brewing online

Learn & Discover online resources

Membership card and pack

Good Beer Guide and CAMRA book offers

Partner Discounts

Ensure a fair deal for your local

Support pubs and breweries

Promote beer quality

SOCIAL EVENTS

Dates for your diary

July

SUNDAY 17 JULY

Norwich Sunday Stroll / 12pm
Start Whalebone, Rosebery, Angel Gardens, Duke of Wellington, Stanley, Artichoke

TUESDAY 19 JULY

Norwich & District Branch Meeting and Social / 7:30pm
Walnut Tree Shades

FRIDAY 22 JULY

Afternoon Campaign Trip visiting pubs taking part in Norwich and Beyond Pub Festival / 12:30pm
BOOKING ESSENTIAL

TUESDAY 26 JULY

Lunchtime Campaign Trip visiting pubs taking part in Norwich and Beyond Pub Festival / 11:30am
BOOKING ESSENTIAL

FRIDAY 29 JULY

Evening Campaign Trip visiting pubs taking part in Norwich and Beyond Pub Festival / 7:15pm
BOOKING ESSENTIAL

SATURDAY 30 JULY

Afternoon Campaign Trip visiting pubs taking part in Norwich and Beyond Pub Festival / 12:30pm
BOOKING ESSENTIAL

August

WEDNESDAY 3 AUGUST

Afternoon Campaign Trip visiting pubs taking part in Norwich and Beyond Pub Festival / 12:30pm
BOOKING ESSENTIAL

FRIDAY 5 AUGUST

First Friday Five visiting pubs taking part in Norwich and Beyond Pub Festival / 7:30pm
Start Unthank Arms, Eagle, Trafford, Kings Arms, Rose Pub & Deli

SATURDAY 6 AUGUST

Afternoon Campaign Trip visiting pubs taking part in Norwich and Beyond Pub Festival / 12:30pm
BOOKING ESSENTIAL

THURSDAY 11 AUGUST

Lunchtime Stroll visiting pubs taking part in Norwich and Beyond Pub Festival / 12pm
Start Brewery Tap, Marlborough, Leopard, Plasterers, Artichoke

SUNDAY 14 AUGUST

Sunday Stroll visiting pubs taking part in Norwich and Beyond Pub Festival / 1pm
Start York Tavern, William & Florence, Pear Tree, Garden House, Black Horse, Earlham

September

FRIDAY 2 SEPTEMBER

Norwich First Friday Five / 7:30pm
Start Woolpack, Murderers, Lamb, Sir Garnet, Walnut Tree Shades

WEDNESDAY 7 SEPTEMBER

Norwich & District Lunchtime Campaign Trip visiting pubs outside Norwich / 11:45am
BOOKING ESSENTIAL

TUESDAY 13 SEPTEMBER

Norwich Lunchtime Stroll / 12pm
Start Angel Gardens, Duke of Wellington, The Brewery Tap, Marlborough, Cottage, Leopard

THURSDAY 15 SEPTEMBER

Norwich & District Branch Meeting and Social
Details TBC

FRIDAY 23 SEPTEMBER

Norwich & District Evening Campaign Trip / 7:15pm
visiting pubs outside Norwich /
BOOKING ESSENTIAL

SUNDAY 25 SEPTEMBER

Norwich Sunday Stroll / 1pm
Start Crown Point Tavern, White Horse Trowse, Norfolk Snow Sports Club, Redwell Brewing Co Taproom

October

FRIDAY 7 OCTOBER

Norwich First Friday Five / 7:30pm
Start Vine, St Andrews Brewhouse, Playhouse Bar, Golden Star, White Lion

WEDNESDAY 12 OCTOBER

Norwich & District Lunchtime Campaign Trip visiting pubs outside Norwich / 11:45am
BOOKING ESSENTIAL

WEDNESDAY 19 OCTOBER

Norwich Lunchtime Stroll / 12pm
Start Coachmakers, Champion, Coach and Horses, Lamb, Bell, Last Pub Standing

WEDNESDAY 26 OCTOBER

Norwich Beer Festival Special Stroll / 2pm
Start at Norwich Beer Festival, then Kings Head, Artichoke, Leopard, Plasterers and back to Norwich Beer Festival (queue jump!)

HOW TO BOOK

Tickets for Norwich & District Campaign Trips are now online via tckty - CAMRA'S new event booking site. Please check facebook.com/NorwichCamra for details or email socials@norwich.camra.org.uk for direct links to book your tickets.

We're hoping to add more events during August, to visit pubs taking part in Norwich and Beyond Pub Festival. Keep an eye on our socials for details.
facebook.com/NorwichPubFestival
[Instagram NorwichPubFestival](https://Instagram.com/NorwichPubFestival)
[Twitter @NorwichPubFest](https://Twitter.com/NorwichPubFest)

Join CAMRA today
www.camra.org.uk/join

SAVING THE BLUE BELL



In recent years, there seems to have been an increase in the number of communities who want to save their local pub. One group in Norfolk have not only been successful in buying the pub and renovating the building but have also won a national award as a result of their efforts.

CAMRA's Pub Saving Award is presented to recognise and celebrate the achievements of groups that have successfully campaigned to save their local pub. It was announced at the end of last year, that the 2021 winner is the group who campaigned to save the **Blue Bell in Stoke Ferry**.

It has been a long and complicated journey since the group formed to save the last pub in the village, after it closed in March 2018. An application to convert the pub to housing was submitted in 2019, but locals were not going to give up and the pub was listed as an Asset

of Community Value (ACV) in 2020. After complicated negotiations and what was described by the judges of the Pub Saving Award as a 'tale of dogged persistence ending in triumph', they bought the pub in June last year.

Since then, a lot of work has been taking place to renovate the building, which was in a poor state of repair including flooding from a burst water tank in the attic. As much as possible has been retained during the renovations, including floor boards which have been included in the construction of the bar. Local tradespeople also stepped forward to provide fittings for the pub. There is still some work to be done before the pub can fully open, but staff have been appointed and plans are in place for a number of facilities for the community.

The award was presented to the group by Andrea Briers, CAMRA's East Anglia Regional Director, at one of the weekend events run at the pub, which was well attended by CAMRA members and locals.

THE KINGS ARMS
 Where traditional old school beer meets both local and modern ales

CHECK OUT OUR EVENTS

**FREE WIFI
DOG FRIENDLY
SKY & BT SPORT**

Fresh Rolls Served or your own favourite Take Away
22 HALL RD, NORWICH NR1 3HQ TEL: 01603 477888
KINGSARMSNR1 KINGS ARMS NORWICH
WWW.KINGSARMSNORWICH.CO.UK

THE STANLEY

WIDE RANGE OF BEERS INCLUDING OUR SPECIALLY BREWED HOUSE ALE

PLUS
 COCKTAILS
 SPIRITS
 SPECIALITY WINES
 FOOD FROM DANOMEY KITCHEN
 OUTSIDE SEATING
 GARDEN ROOM

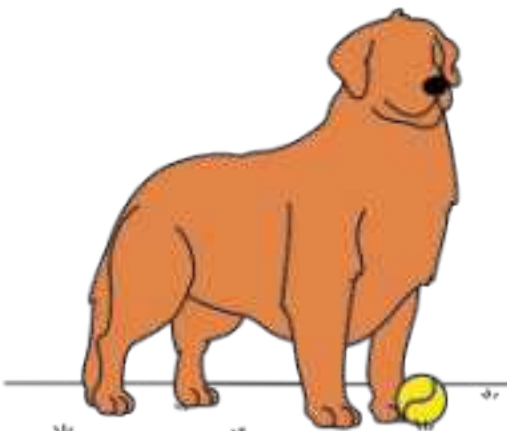
REFURBISHMENT NOW COMPLETE!

MEDITERRANEAN COURTYARD
 LARGE RANGE OF DRINKS, ALES, BEERS, SPIRITS AND WINE
 ALL SET IN THE PEACEFUL SURROUNDS OF TROWSE

© CROWN_POINTTAVERN
CROWN POINT TAVERN
 TROWSE NEWTON NR14 8RN

© STANLEYNR3
 33 MAGDALEN STREET NR3 4LG

LAST ORDERS



DOG DAYS AREN'T OVER

“Day o’t dogs done” my father would say when I raised the issue of getting a puppy. He was wrong. 2022 may be the Chinese Year of the Tiger, but I think we are approaching Peak Dog. They are everywhere.

Universities have dogs to calm exam nerves, schools invite dogs in to calm pupils, and I read that there are now dogs at Aberdeen airport to help relax nervous passengers. Before you board the flight, you can pet Noodle, the friendly Labrador to ease away your anxieties. Presumably this is before you are inspected by his brother Pot Noodle on the lookout for illicit drugs.

Pubs are not immune and seem to be competing amongst each other to attract our furry friends. The cheeky little paw print on the chalk board outside. Bowls of water to slake their thirst. Bone shaped treats in a jar on the bar. Even the Good Beer Guide now includes a symbol for dog friendly

pubs. Enough already? Not at all. When we called in at the Fox at Garboldisham they even had dog beer. In two flavours. Snuffle Dog Beer is based on Belgian style beer, it has 0% alcohol content and you can choose between chicken flavour or beef and chicken flavour. The ingredients are said to be ‘human grade’, so it is pretty healthy, though I might stick to traditional bitter myself.

Intrigued, I did a bit of research, only to find that the Americans got there first. Over there you can buy Flat 12 Paws Dog Beer, made from carrots, potatoes, meat bones and brewers yeast, and said to taste like a nice broth. Bowser Brewing Company offers Beefy Brown Ale or Cock-a-doodle-brew which contain glucosamine, good for the joints. Dawg Grog is a

vegetarian option, while in Brazil, Dog Beer is supposed to be super popular.

But what about pubs serving food to dogs? Pup Grub? Dog’s Dinner? I’m sure the dogs would be keen, but they’re not great at washing their paws before eating, especially when sharing your meal. And there are some people that have an allergy or an irrational fear of dogs.

So, let’s have dogs in pubs, but make sure they are nice and clean and well behaved. Keep them out of the restaurant areas and maybe have a dog free room. Then we can all be happy to see dogs in pubs, except perhaps for the Black Shuck.

■ bar.man@btinternet.com

KING'S HEAD

CASK ALE HOUSE



LOCATED IN THE HEART OF NORWICH'S ANTIQUE AND VINTAGE SHOPPING PRECINCT, THE KING'S HEAD IS A CASK ALE FREEHOUSE

OPEN
SUN-WEDS
NOON-MIDNIGHT
(Last Admission 11pm)
THURS-SAT
NOON-LATE
(Last Admission Midnight)



- ☑ We have an ever-changing selection of up to 14 draught ales and ciders
- ☑ Friendly people, great conversation the way pubs used to be
- ☑ A range of international bottled beers and premium spirits
- ☑ We showcase local microbreweries and excellent guests from further afield
- ☑ No music, no television, no keg beer
- ☑ Mild, stout or porter always available

42 MAGDALEN STREET NORWICH NR3 1JE

www.kingsheadnorwich.com



THE FAT CAT

— Est. 1991 —



*"A Real Ale
Lovers' Paradise"*

Roger Pretz
Good Beer Guide

30 Years Old!

& still purring!



Follow Us.



ONLINE SHOP NOW OPEN! - www.fatcatpub.co.uk/shop